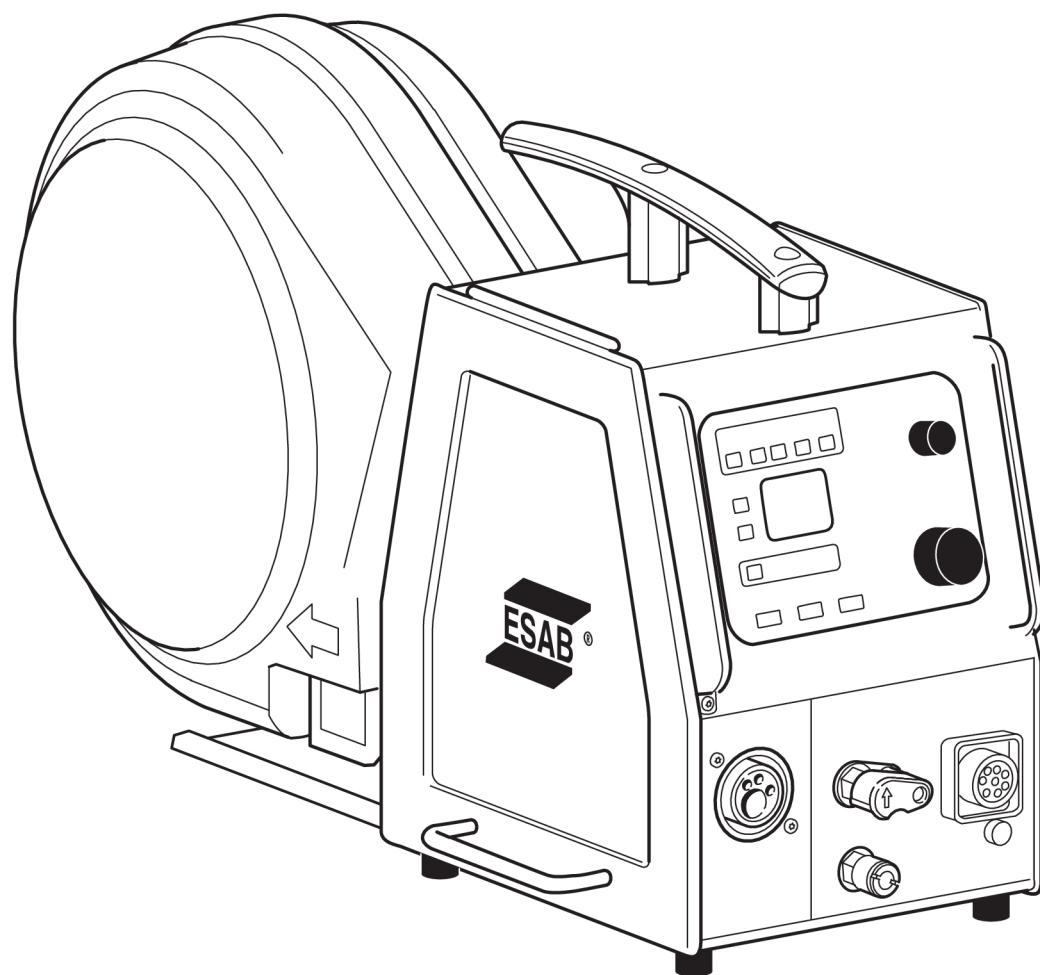




Aristo®, Origo™

Feed 3004, Feed 4804



Spare parts list

Ordering no.	Product
0460 526 881	Aristo™ Feed 3004
0460 526 481	Aristo™ Feed 3004, US version
0460 526 886	Aristo™ Feed 3004, U6
0460 526 486	Aristo™ Feed 3004, U6, US version
0460 526 887	Origo™ Feed 3004, MA23
0460 526 889	Origo™ Feed 3004, MA24
0460 526 489	Origo™ Feed 3004, MA24, US version
0460 526 891	Aristo™ Feed 3004 with water
0460 526 896	Aristo™ Feed 3004, U6 with water
0460 526 897	Origo™ Feed 3004, MA23 with water
0460 526 899	Origo™ Feed 3004, MA24 with water
0460 526 981	Aristo™ Feed 4804
0460 526 986	Aristo™ Feed 4804, U6
0460 526 586	Aristo™ Feed 4804, U6, US version
0460 526 987	Origo™ Feed 4804, MA23
0460 526 989	Origo™ Feed 4804, MA24
0460 526 589	Origo™ Feed 4804, MA24, US version
0460 526 991	Aristo™ Feed 4804 with water
0460 526 996	Aristo™ Feed 4804, U6 with water
0460 526 997	Origo™ Feed 4804, MA23 with water
0460 526 999	Origo™ Feed 4804, MA24 with water
0460 526 670	Feed 3004 MA25 Pulse AL
0460 526 671	Feed 3004w MA25 Pulse AL
0460 526 672	Feed 3004 MA25 Pulse Steel
0460 526 673	Feed 3004w MA25 Pulse Steel
0460 526 680	Feed 3004 MA25 Pulse AL NA
0460 526 681	Feed 3004w MA25 Pulse AL NA
0460 526 682	Feed 3004 MA25 Pulse Steel NA
0460 526 683	Feed 3004w MA25 Pulse Steel NA
0459 839 003	Spare parts list for control panels Origo® MA23, MA24, MA25 Pulse, TA23, TA24, TA24 AC/DC
0458 818 990	Spare parts list for control panel Aristo™U6

Spare parts may be ordered through your nearest ESAB dealer, see esab.com. When ordering, please state product type, serial number, denominations and ordering numbers according to the spare parts list. This facilitates dispatch and ensures correct delivery.

Maintenance and repair work should be performed by an experienced person, and electrical work only by a trained electrician. Use only recommended spare parts.

For accessories to the product, see the instruction manual.

TABLE OF CONTENTS

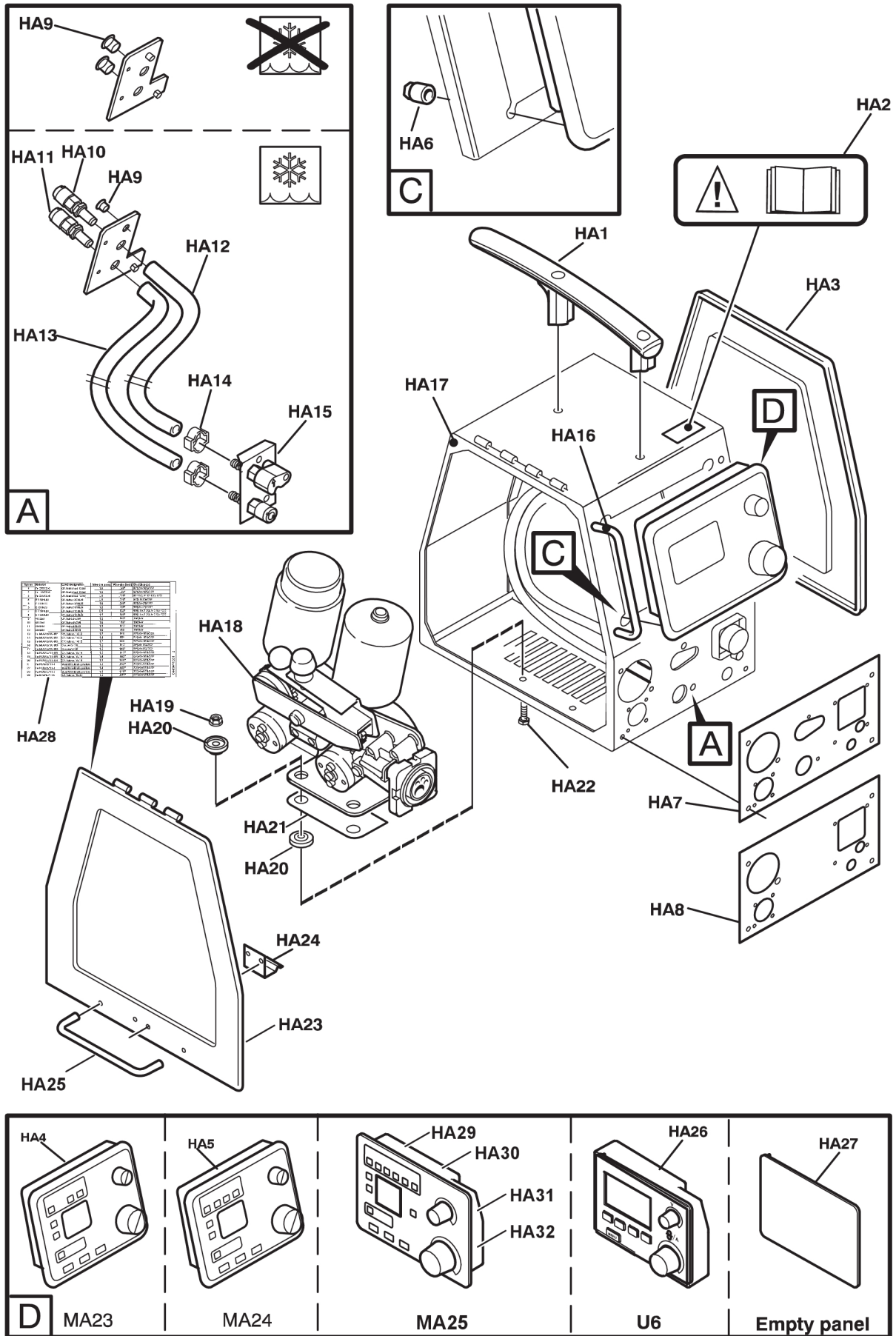
SPARE PARTS **4**
 Feed 3004, Feed 4804..... **4**
 Feed 3004 **14**
 Feed 4804 **18**
WEAR PARTS..... **20**

SPARE PARTS

Feed 3004, Feed 4804

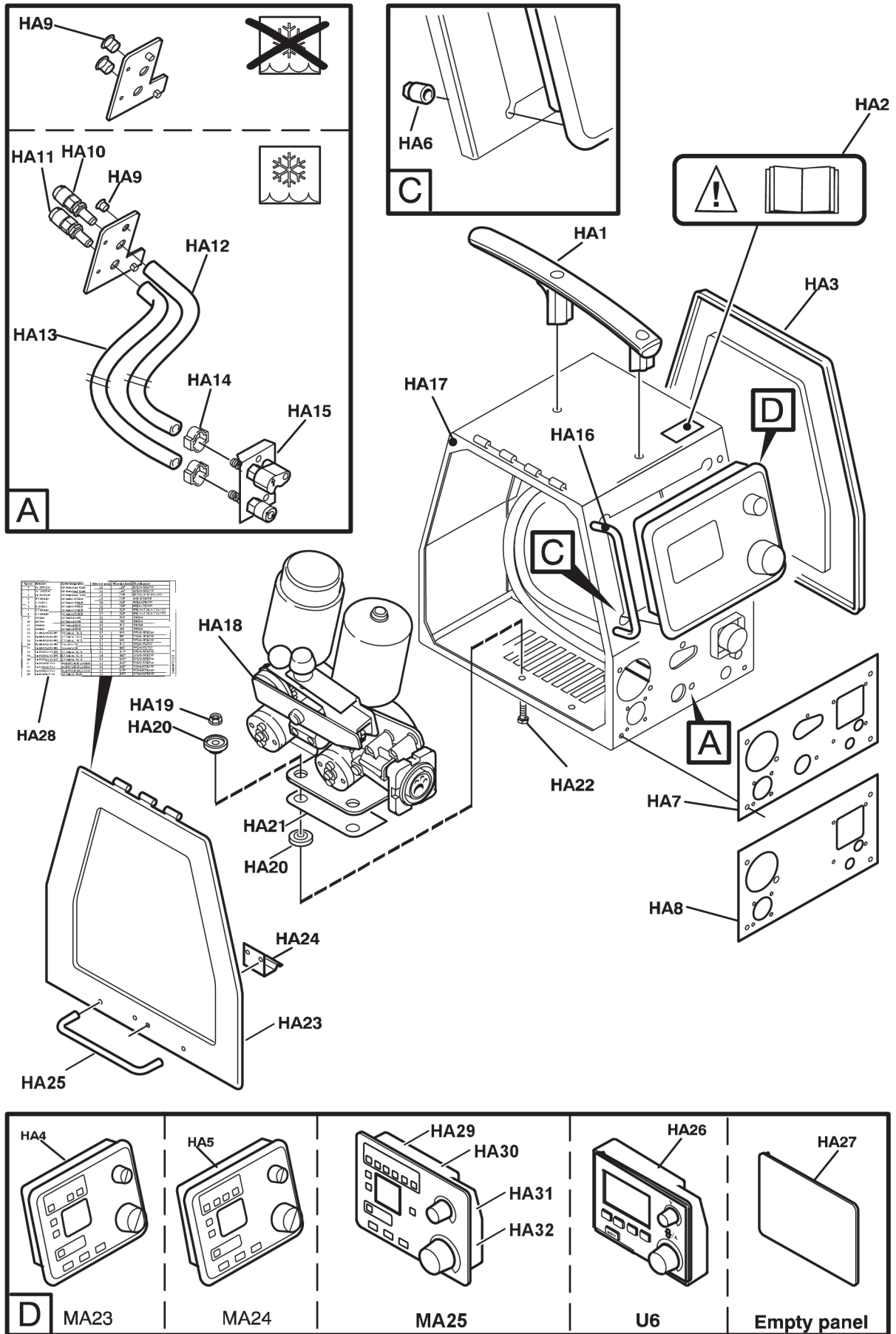
C = Component designation in the circuit diagram

Item	Qty	Ordering no.	Denomination	Notes	C
HA1	1	0459 119 001	Handle		
HA2	1	0458 950 001	Sign		
HA3	1	0459 069 004	Side panel		
HA4	1	0459 773 889	MMC module	Panel MA23. See separate spare parts list.	
HA5	1	0459 773 886	MMC module	Panel MA24. See separate spare parts list.	
HA6	5	0458 544 001	Insulating nut		
HA7	1	0460 523 002	Front plate	For unit with water conn. and single front connector	
	1	0458 680 002	Front plate	For unit with water conn. and double front connector	
HA8	1	0460 523 001	Front plate	For unit without water conn. and single front connector	
	1	0458 680 001	Front plate	For unit without water conn. and double front connector	
HA9	2	0192 230 105	Cover plug		
H10	1	0365 803 017	Quick connection	Female, blue	
H11	1	0365 803 016	Quick connection	Female, red	
HA12	1	0456 496 002	Hose, blue	L=0.33, Ø 9/5mm, to be ordered per metre	
HA13	1	0456 496 001	Hose, red	L=0.33, Ø 9/5mm, to be ordered per metre	
HA14	7		Hose clamp	Ø 11.3/10.8	
HA15	1		Water outlet with lock	For further information, see "Water connection spare kit" further on in this document.	13S1
HA16	3	0458 777 001	Protection clamp		
HA17	1	0192 526 002	Sealing strip	L=1.34	
HA18	1		Wire feed mechanism	For Feed 3004, see spare parts for Feed 3004 further on in this document.	
	1		Wire feed mechanism	For Feed 4804, see spare parts for Feed 4804 further on in this document.	
HA19	2		Nut	M6	
HA20	4	0153 043 002	Insulating washer		
HA21	1	0459 256 001	Insulating plate		
HA22	2		Screw	M6×20	



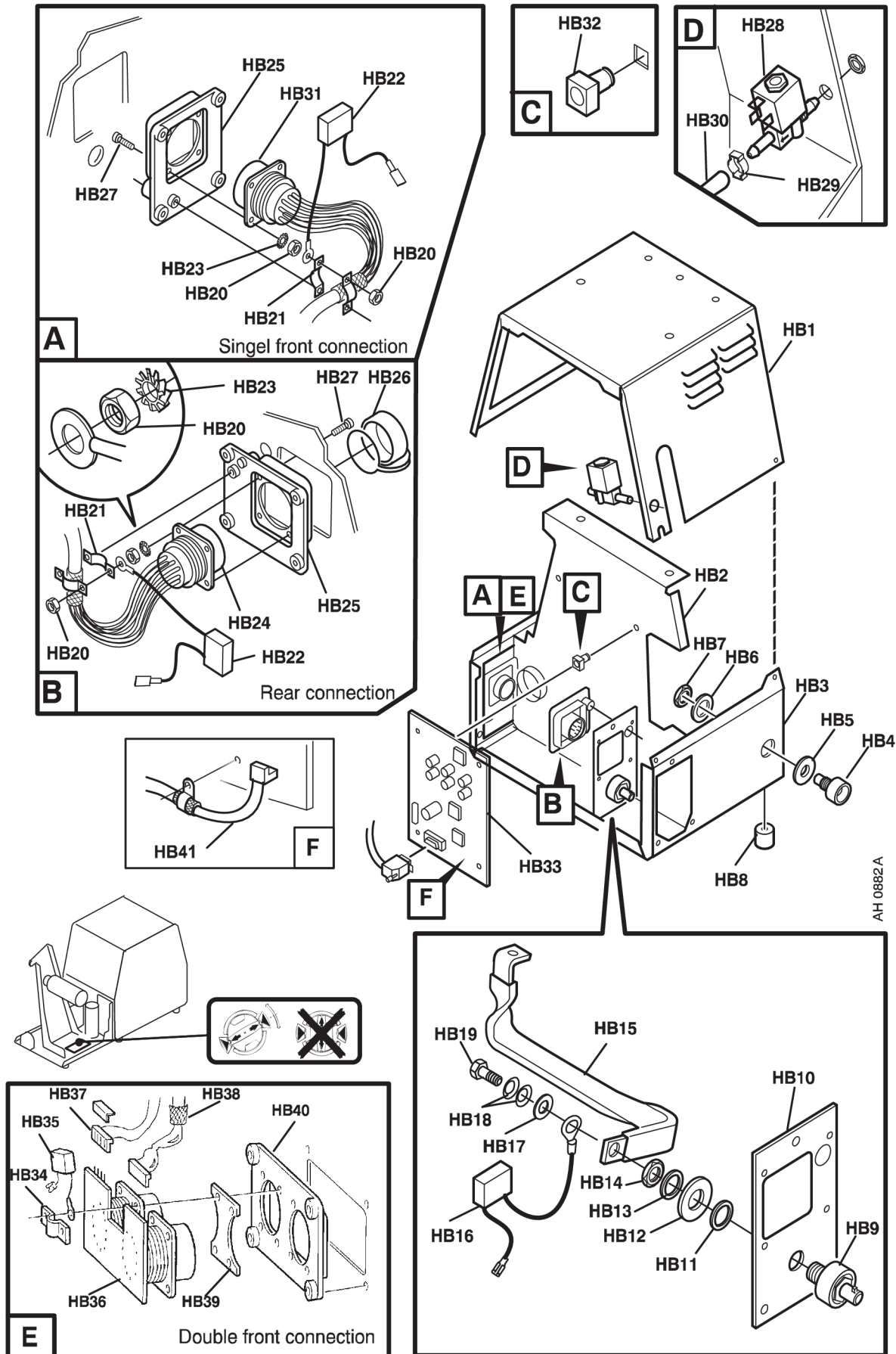
C = Component designation in the circuit diagram

Item	Qty	Ordering no.	Denomination	Notes	C
HA23	1	0459 069 003	Side panel		
-		0459 213 001	Label for side panel		
HA24	1	0459 547 001	Locking device		
HA25	3	0458 777 002	Protection clamp	Handle	
HA26	1	0458 535 890	MMC module	Panel U6. See separate spare parts list.	
HA27	1	0458 535 887	Cover plate MMC space		
HA28	1		Sticker, synergic lines	For Feed 3004, only for MA24	
	1		Sticker, synergic lines	For Feed 4804, only for MA24	
	1		Sticker, synergic lines	For Feed 3004 MA25 Pulse AL EUR	
	1		Sticker, synergic lines	For Feed 3004 MA25 Pulse Steel EUR	
	1		Sticker, synergic lines	For Feed 3004 MA25 Pulse AL NA	
	1		Sticker, synergic lines	For Feed 3004 MA25 Pulse Steel NA	
HA29	1	0459 773 670	MMC Module	MA25 Pulse AL EUR. See separate spare parts list.	
HA30	1	0459 773 671	MMC Module	MA25 Pulse Steel EUR. See separate spare parts list.	
HA31	1	0459 773 680	MMC Module	MA25 Pulse AL NA. See separate spare parts list.	
HA32	1	0459 773 681	MMC Module	MA25 Pulse Steel NA. See separate spare parts list.	



C = Component designation in the circuit diagram**(W) = Wear part, see the Wear parts chapter**

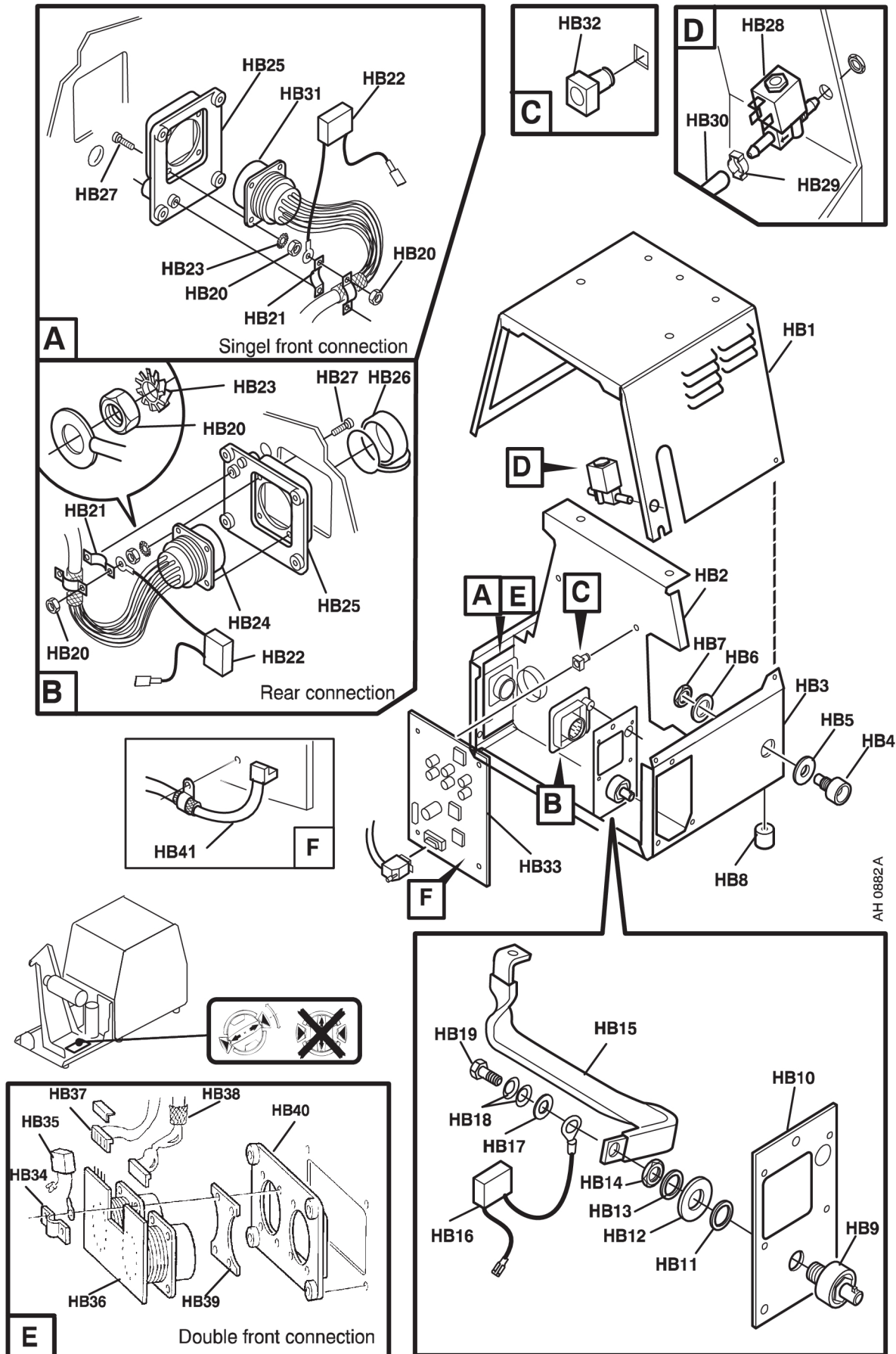
Item	Qty	Ordering no.	Denomination	Notes	C
HB1	1	0459 071 884	Cover		
HB2	1	0459 099 001	Middle plate		
HB3	1	0458 662 880	Bottom plate		
HB4	1	(W)	Inlet nozzle		
HB5	1	0458 748 001	Insulating bushing		
HB6	1	0458 748 002	Insulating washer		
HB7	1		Nut	M 10	
HB8	4	0467 695 001	Rubber foot	Ø 20/6.4×3, When ordering: 4 pieces delivered	
HB9	1	0160 609 881	Welding current terminal		
HB10	1	0459 062 003	Rear plate		
HB11	1	0466 325 001	Gasket		
HB12	1		Spacer ring	Included in item HB9	
HB13	1		Washer	Included in item HB9	
HB14	1		Nut	Included in item HB9	
HB15	1	0460 942 001	Bar flexible		
HB16	1	0467 911 881	Capacitor		13C4
HB17	1		Washer	Ø 22/10.5×2	
HB18	2		Spring washer	Ø 20/10.2×1.1	
HB19	1		Screw	M10×20	
HB20	6		Nut	M3	
HB21	4	0456 686 880	Clamp		
HB22	2	0467 911 884	Capacitor	0.1 µF 250V	13C2, 13C3
HB23	2		Washer lock	3.2×6 ST	
HB24	1	0538 500 110	Panel plug	10 pole	13XP1
HB25	2	0459 854 001	Insulation		
HB26	2	0455 516 001	Protection cap		
HB27	8		Screw	6-19×8	
HB28	1	0193 054 007	Solenoid valve	with quick connection	13YV1
HB29	1		Hose clamp	11.3/10.8	
HB30	1	0456 496 001	Hose, red	L=0.50, Ø9/5mm, to be ordered per metre	
HB31	1	0538 500 111	Panel socket	10 pole	13XS15
HB32	4	0194 019 005	Spacer		



C = Component designation in the circuit diagram

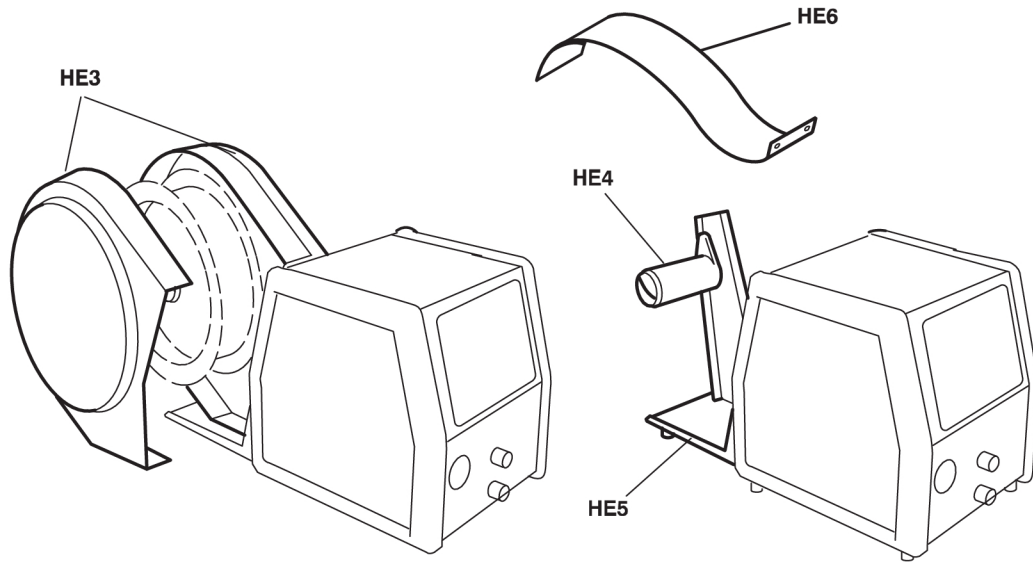
(W) = Wear part, see the Wear parts chapter

Item	Qty	Ordering no.	Denomination	Notes	C
HB33	1	0487 187 890	PC-board	The circuit board must be configured when installed	13AP1
	1	0487 187 883	PC-board	Circuit board configured for Feed 3004 for ser.no. 745-xxx-xxxx	13AP1
	1	0487 187 888	PC-board	Circuit board config for Feed 3004 from ser.no. 910-xxx-xxxx	13AP1
	1	0487 187 884	PC-board	Circuit board configured for Feed 4804	13AP1
	1	0487 187 891	PC-board	Circuit board configured for Feed 3004 from ser.no 540-xxx-xxxx new motor	13AP1
HB34	2	0456 686 880	Clamp		
HB35	2	0467 911 884	Capacitor		13C2, 13C3
HB36	1	0486 388 880	Circuit board		13AP2
HB37	1	0193 260 153	Connector		13XS11
HB38	1	0458 681 880	Cable	Connector 13XS9, ferrite rings 13L2 and 13L3 included	
HB39	1	0457 799 001	Screen plate		
HB40	1	0457 801 001	Insulation		
HB41	1	0458 681 882	Cable	Cable between 20AP1 and MMC unit, cable connectors are included	13XP14, 13XS14



SPARE PARTS

Item	Qty	Ordering no.	Denomination	Notes
HE3	1	0458 674 880	Bobbin cover	
HE4	1	0146 967 881	Brake hub	
HE5	1	0459 294 881	Spool attachment	
HE6	1	0156 633 003	Reel cover	

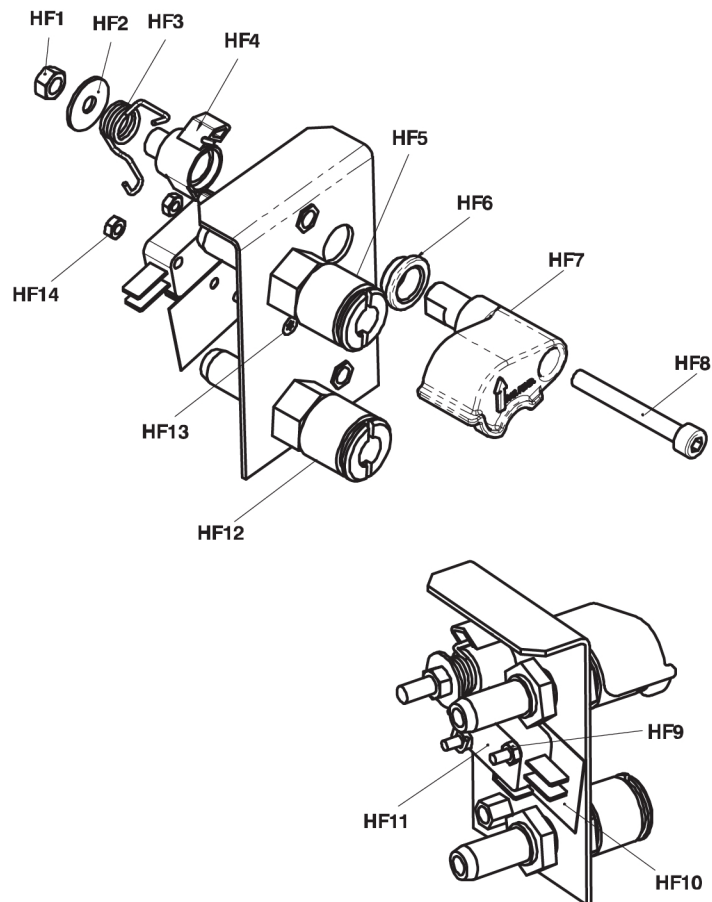


SPARE PARTS

Item	Qty	Ordering no.	Denomination	Notes
HF1	1		Nut	M5
HF2	1		Washer	D16/5×1
HF3	1		Spring	
HF4	1		Water lock cam	
HF5	1	0365 803 015	Quick connector	Female, blue
HF6	1		Water lock bushing	
HF7	1		Water lock outlet	
HF8	1		Screw	M5×35
HF9	1		Nut	M3
HF10	1	0458 589 001	Insulation plate	
HF11	1	0458 364 001	Micro switch	
HF12	1	0365 803 014	Quick connector	Female, red
HF13	2		Screw	M3×20
HF14	2		Nut	M3

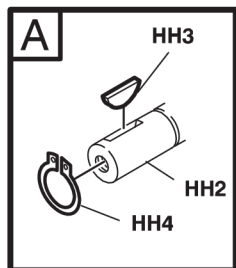
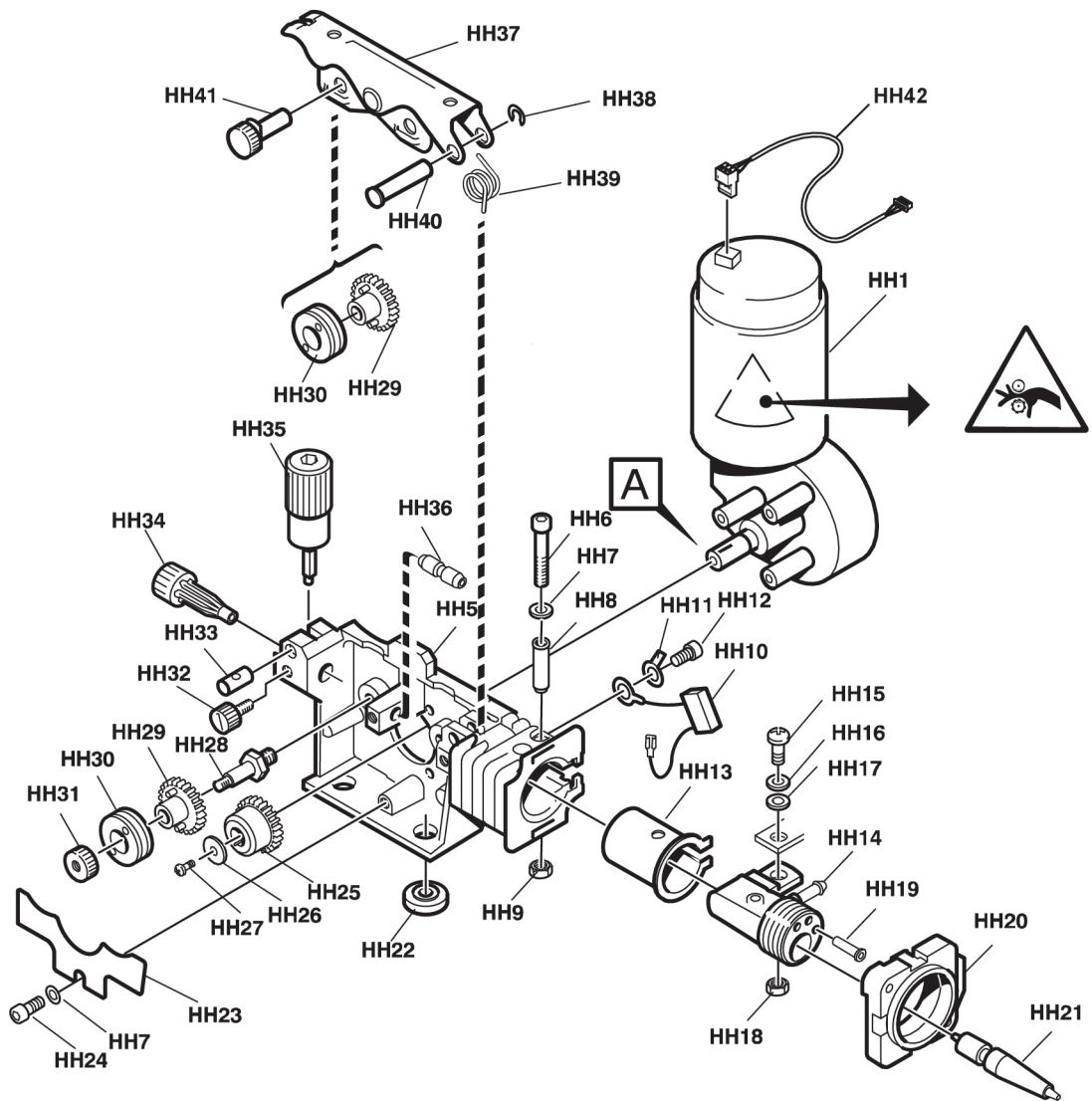
SPARE PARTS SET

Item	Qty	Ordering no.	Denomination	Notes
HF50	1	0458 370 900	Water connection spare kit	Contains items HF1, HF2, HF3, HF4, HF6, HF7 and HF8



Feed 3004**C = Component designation in the circuit diagram****(W) = Wear part, see the Wear parts chapter**

Item	Qty	Ordering no.	Denomination	Notes	C
		0459 000 880	Wire feed mechanism	Includes items HH1–HH21 and HH23–HH41, Type MEM 30 For serial no. 745-xxx-xxxx	
		0459 000 895	Wire feed mechanism	Includes items HH1–HH21 and HH23–HH41, Type MEM 30 From serial no. 910-xxx-xxxx	
		0459 000 901	Wire feed mechanism	Includes items HH1–HH21 and HH23–HH42, Type PM4228 From serial no. 540-xxx-xxxx	
HH1	1	0455 077 002	Drive unit	With pulse generator For serial no. 745-xxx-xxxx	13M1, 13G1
	1	0459 808 002	Drive unit	With pulse generator From serial no. 910-xxx-xxxx	13M1, 13G1
	1	0465 827 880	Drive unit	With pulse generator, includes HH42 From serial no. 540-xxx-xxxx	13M1, 13G1
HH2	1	0332 351 012	Shaft (with pinion)	Included in item HH1	
HH3	1	0191 496 114	Key	Included in item HH1	
HH4	1	0215 701 007	Locking washer	Included in item HH1	
HH5	1	0455 046 003	Gear housing		
HH6	1		Screw	M6×40	
HH7	2		Washer	Ø 12/6.4×1.5	
HH8	1	0455 048 001	Insulating tube		
HH9	1		Nut	M6	
HH10	1	0467 911 880	Capacitor	0.1 µF 250V with cable lugs	13C5
HH11	1		Flat pin	6.3×0.8 M6	
HH12	4		Screw	M6×12	
HH13	1	0455 045 001	Insulating sleeve		
HH14	1	0455 044 001	Current connection		
HH15	1		Screw	M8×25	
HH16	1		Washer	Ø 16/8.4×1.5	
HH17	1		Belleville washer	Ø 16/8.2×0.9	
HH18	1		Nut	M6	
HH19	2	0368 750 001	Insulating sleeve	For cable set	
	1	0458 710 890	Cable set		
HH20	1	0455 047 001	Front flange		
HH21	1	(W)	Outlet nozzle		
HH22	4	0153 043 002	Insulating washer		
HH23	1	0469 838 001	Cover		

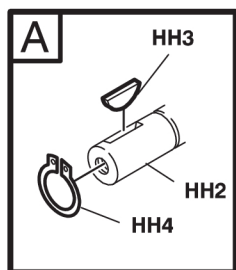
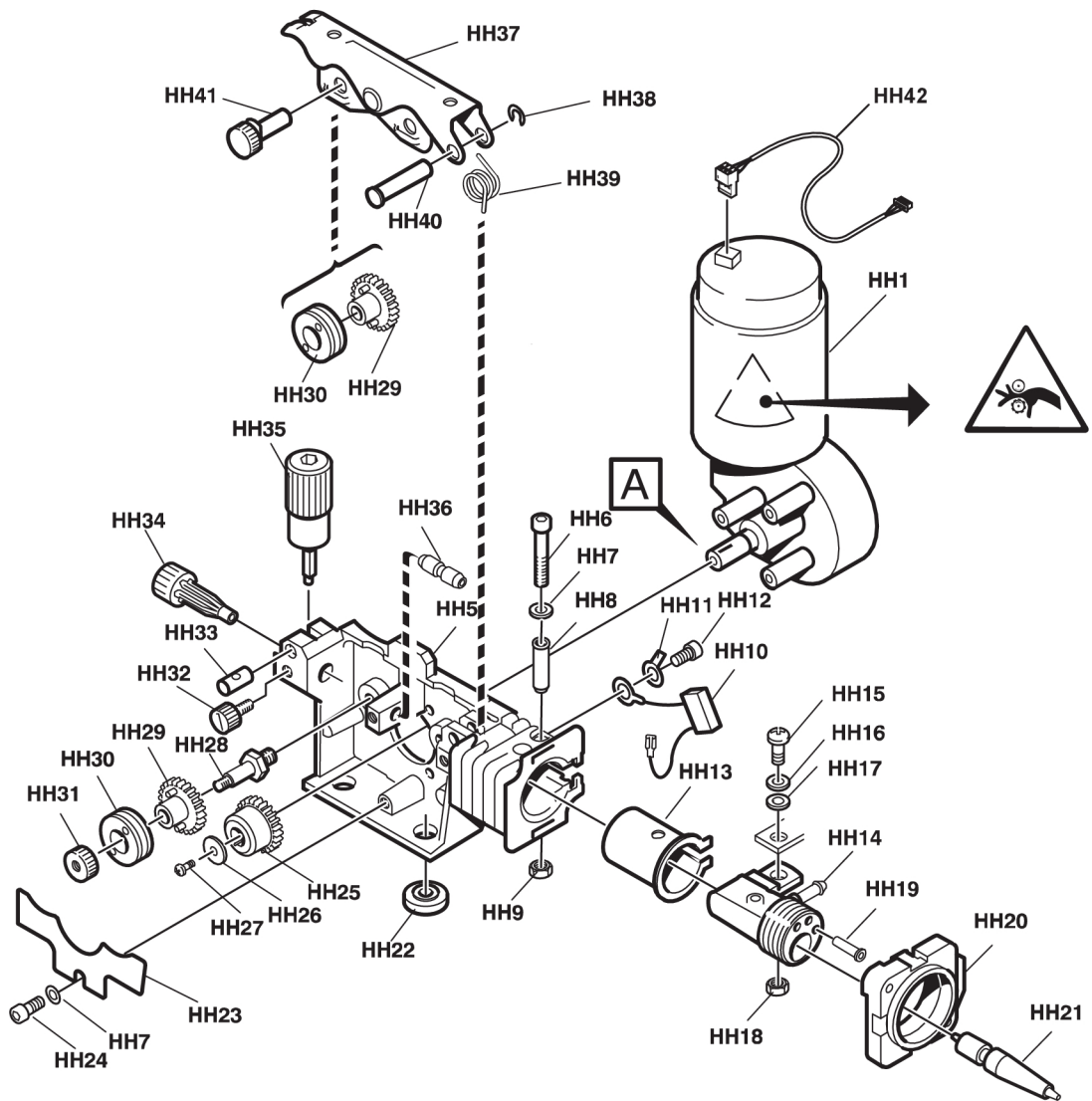


C = Component designation in the circuit diagram**(W) = Wear part, see the Wear parts chapter**

Item	Qty	Ordering no.	Denomination	Notes	C
HH24	3		Screw	M6×12	
HH25	1	(W)	Drive gear		
HH26	1		Washer	Ø 16/5×1	
HH27	1		Screw	M4×12	
HH28	2		Axle feed roll	See item HH102	
HH29	4	(W)	Gear adapter		
HH30	4	(W)	Feed/pressure roller		
HH31	2		Locking nut	See item HH102	
HH32	3	0458 689 001	Screw for nozzle		
HH33	1		Pin bolt	See item HH101	
HH34	1	(W)	Inlet nozzle		
HH35	1		Pressure device	See item HH101	
HH36	1	(W)	Intermediate nozzle		
HH37	1		Pressure arm	See item HH100	
HH38	1		Locking washer	See item HH100	
HH39	1		Torsion spring	See item HH100	
HH40	1		Shaft	See item HH100	
HH41	2	0458 999 001	Shaft		
HH42	1		Encoder cable	Included in HH1 From serial no. 540-xxx-xxxx	

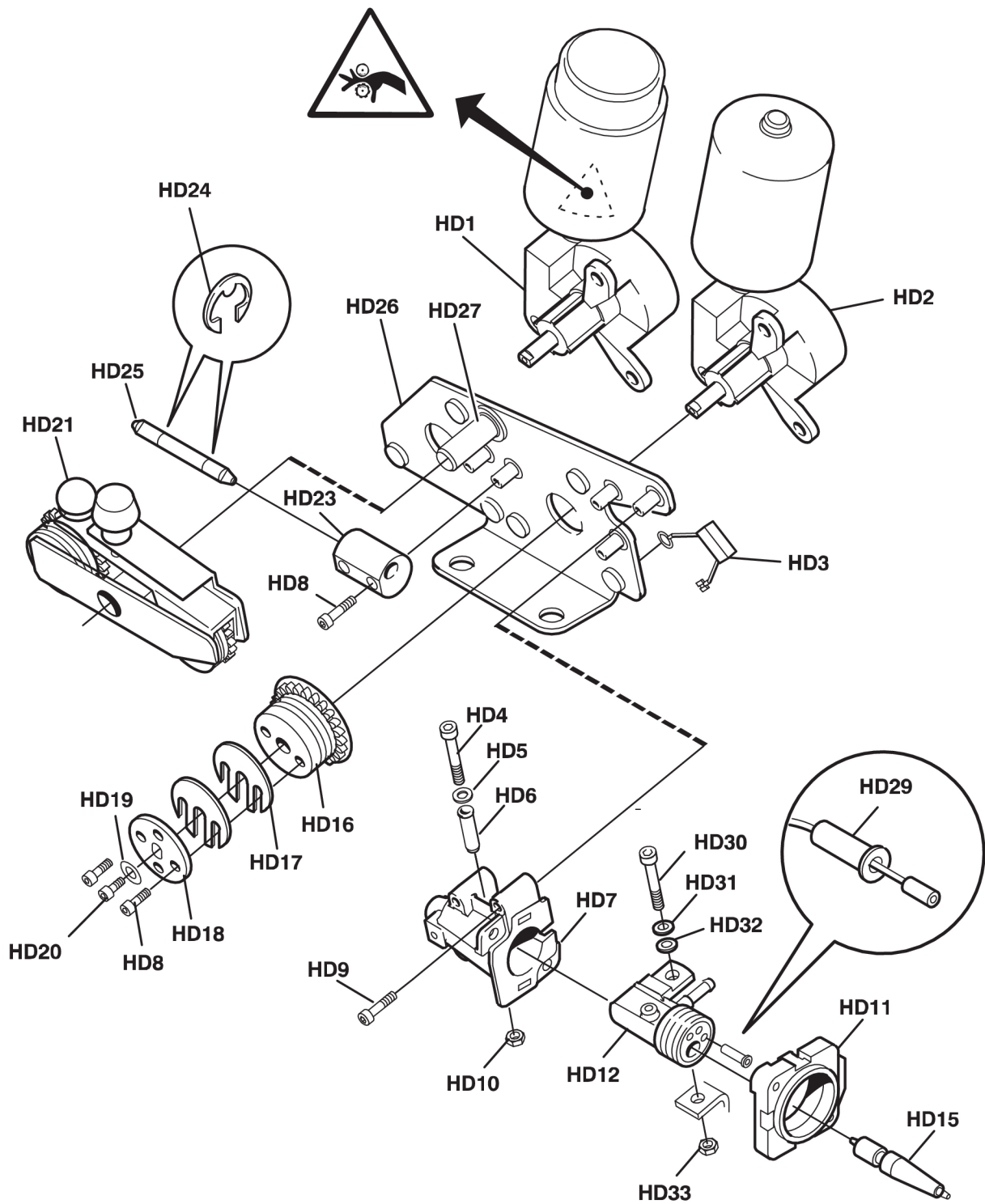
SPARE PARTS SETS

Item	Ordering no.	Denomination	Notes
HH100	0459 227 880	Pressure arm set	Includes items HH37, HH38, HH39 and HH40
HH101	0459 228 880	Pressure device set	Includes items HH33, HH35 and one screw M3×12
HH102	0458 722 880	Axle and nut	Includes items HH28 and HH31



Feed 4804**C = Component designation in the circuit diagram****(W) = Wear part, see the Wear parts chapter**

Item	Qty	Ordering no.	Denomination	Notes	C
		0458 547 880	Wire feed mechanism	Type MEL 48	
HD1	1	0156 728 012	Drive unit	With pulse generator	13M2, 13G1
-	1	0193 260 063	Connector	4 pole	13XS4
HD2	1	0156 728 011	Drive unit		13M3
	1	0191 548 010	Flat pin		
	6		Nut	M8	
HD3	1	0467 911 880	Capacitor	0.1 µF 250V with cable lugs	13C6
HD4	1		Screw	M6×40	
HD5	1		Washer	Ø 6.4/12×1.5	
HD6	1	0455 048 001	Insulating tube		
HD7	1	0458 545 001	Connection housing		
HD8	9		Screw	M5×20	
HD9	1		Screw	M6×16	
HD10	1		Nut	M6	
HD11	1	0455 047 001	Front flange		
HD12	1	0455 044 001	Current connection		
HD15	1	(W)	Outlet nozzle		
HD16	2	(W)	Feed roller		
HD17	4	0156 707 001	Distance washer		
HD18	2	0156 707 002	Adjustement spacer		
HD19	2	0366 944 001	Washer		
HD20	2		Screw	M5×16	
HD21	1	(W)	Bogey		
HD23	1	0366 961 001	Inter nozzle support		
HD24	2	0215 702 708	Locking washer		
HD25	1	(W)	Intermediate nozzle		
HD26	1		Wire feed plate		
HD27	1	0366 962 001	Bogey axle		
-	1		Screw	M8×30	
-	1		Washer	Ø 26/8.4×5	
HD29	2	0368 750 001	Insulating sleeve	For cable set	
	1	0459 229 880	Cable set		
HD30	1		Screw	M8×25	
HD31	1		Washer	Ø 16/8.4×1.5	
HD32	1		Belleville washer	Ø 16/8.2×0.9	
HD33	1		Nut	M6	



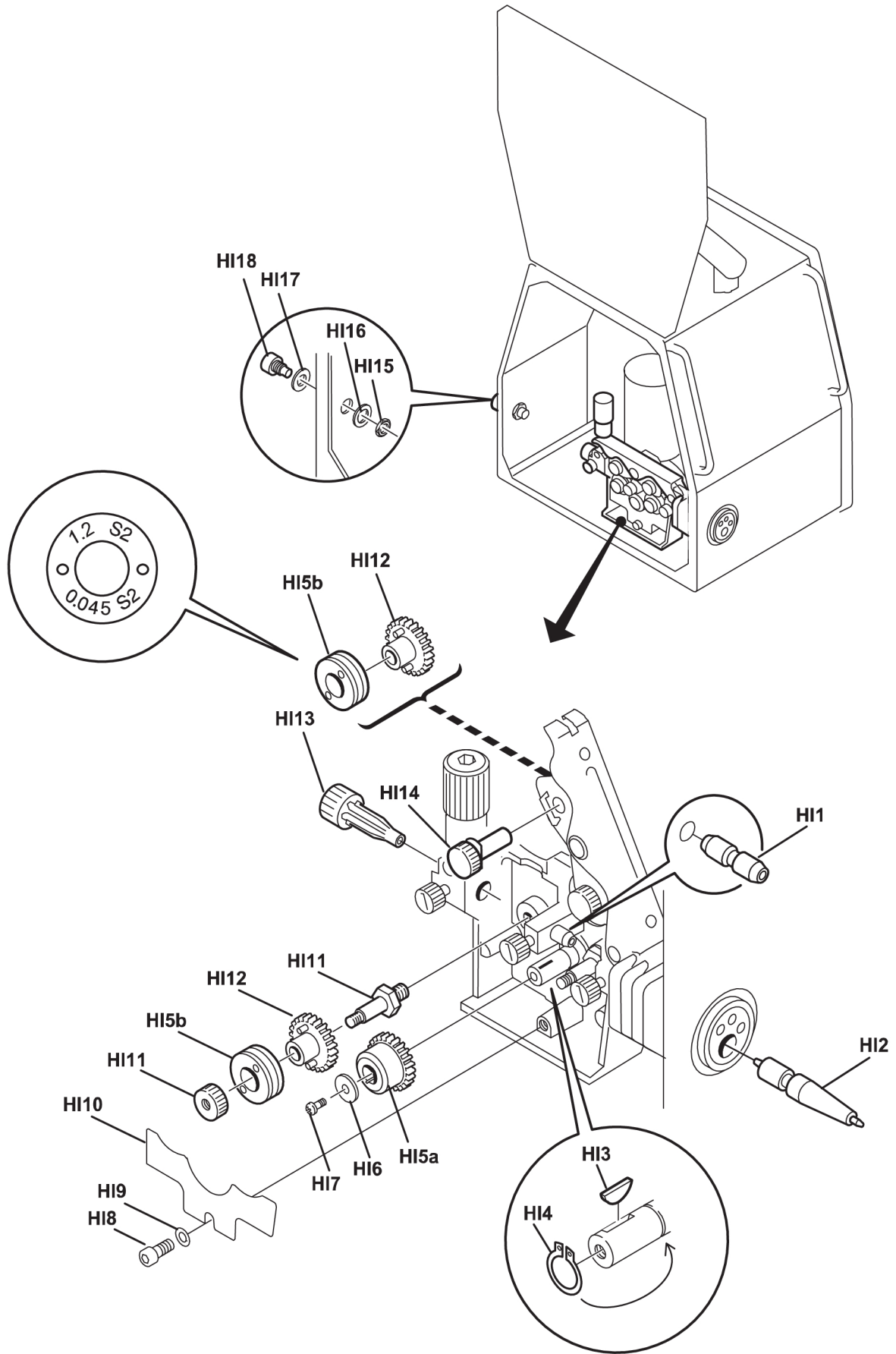
WEAR PARTS

Feed 3004

Item	Ordering no.	Denomination	Notes	Wire type	Wire dimensions
HI1	0455 072 002	Intermediate nozzle		Fe, Ss & cored	
	0456 615 001	Intermediate nozzle		Al	
HI2	0469 837 880	Outlet nozzle		Fe, Ss & cored	Ø 2.0 mm steel for 0.6-1.6 mm
	0469 837 881	Outlet nozzle		Al	Ø 2.0 mm plastic for 0.8-1.6 mm
HI3	0191 496 114	Key			
HI4	0215 701 007	Locking washer			
HI5a	0459 440 001	Motor gear euro	Drive gear		

Item	Ordering number	Denomination	Wire type	Wire dimensions (mm)	Groove type	Roller markings
HI5b	0459 052 001	Feed/pressure rollers	Fe, Ss & cored	Ø 0.6 & 0.8 mm	V	0.6 S2 & 0.8 S2
	0459 052 002	Feed/pressure rollers	Fe, Ss & cored	Ø 0.8 & 1.0 mm	V	0.8 S2 & 1.0 S2
	0459 052 003	Feed/pressure rollers	Fe, Ss & cored	Ø 0.9/1.0 & 1.2 mm	V	1.0 S2 & 1.2 S2
	0459 052 013	Feed/pressure rollers	Fe, Ss & cored	Ø 1.4 & 1.6 mm	V	1.4 S2 & 1.6 S2
	0458 825 001	Feed/pressure rollers	Cored	Ø 0.9/1.0 & 1.2 mm	V-Knurled	1.0 R2 & 1.2 R2
	0458 825 010	Feed/pressure rollers	Cored	Ø 1.2/1.2 mm	V-Knurled	1.2 R2 & 1.4 R2
	0458 825 002	Feed/pressure rollers	Cored	Ø 1.2 & 1.4 mm	V-Knurled	1.2 R2 & 1.2 R2
	0458 825 003	Feed/pressure rollers	Cored	Ø 1.6 mm	V-Knurled	1.6 R2 & 2.0 R2
	0458 824 001	Feed/pressure rollers	Al	Ø 0.8 & 0.9/1.0 mm	U	0.8 A2 & 1.0 A2
	0458 824 002	Feed/pressure rollers	Al	Ø 1.0 & 1.2 mm	U	1.0 A2 & 1.2 A2
	0458 824 003	Feed/pressure rollers	Al	Ø 1.2 & 1.6 mm	U	1.2 A2 & 1.6 A2

Only use pressure and feed rollers marked **A2**, **R2** or **S2**.
The rollers are marked with wire dimension in mm, some are also marked with inch.



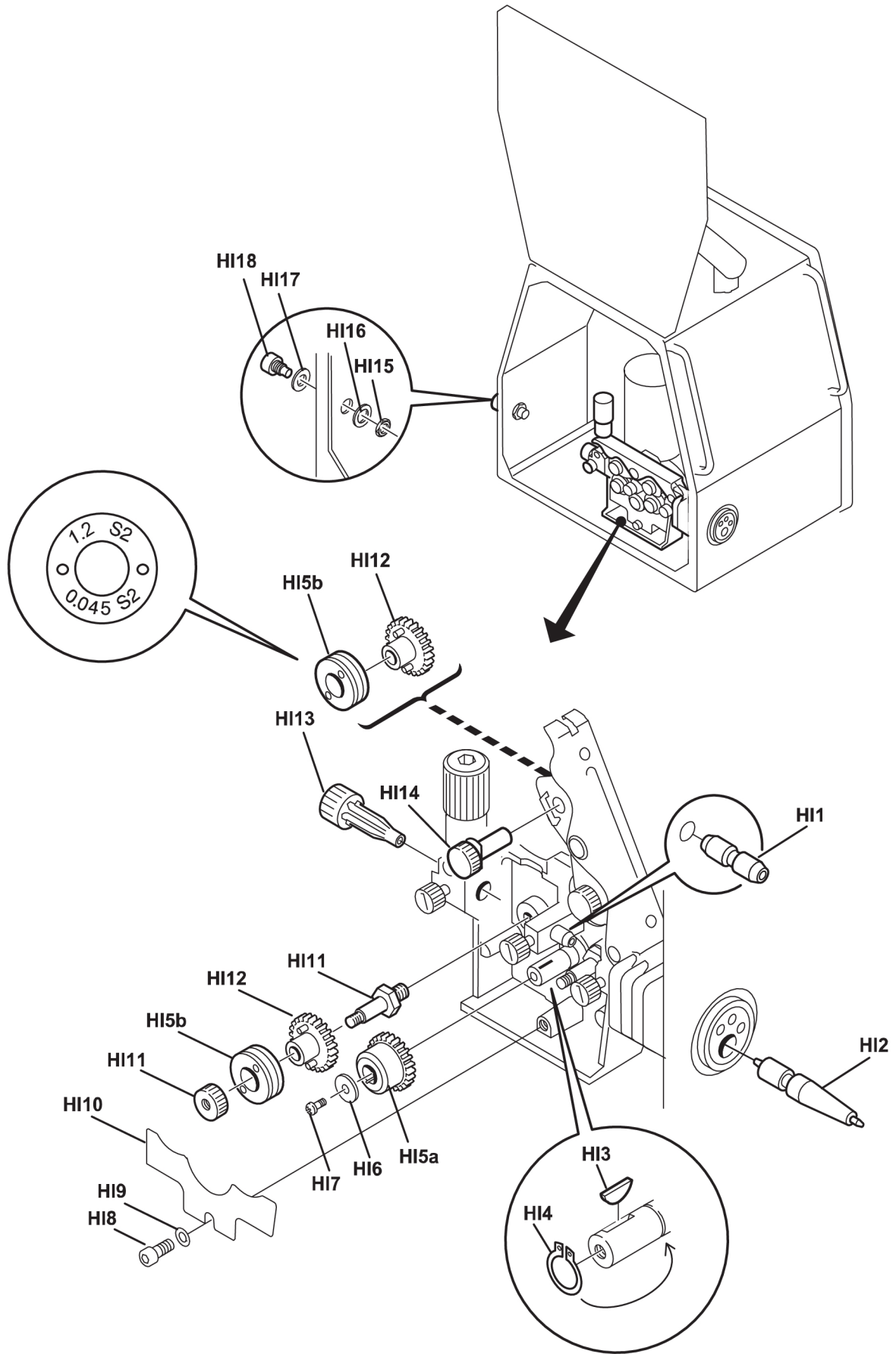
WEAR PARTS

Item	Ordering no.	Denomination	Notes
HI6		Washer	Ø 16/5×1
HI7		Screw	M4×12
HI8		Screw	M6×12
HI9		Washer	Ø 16/8.4×1.5
HI10	0469 838 001	Cover	
HI11	0458 722 880	Axle and Nut	
HI12	0459 441 880	Gear adapter	
HI13	0455 049 001	Inlet nozzle	Ø 3 mm for 0.6-1.6 mm Fe, Ss, Al and cored wire
HI14	0458 999 001	Shaft	
HI15		Nut	M10
HI16	0458 748 002	Insulating washer	
HI17	0458 748 001	Insulating bushing	

Item	Ordering no.	Denomination	Wire type	Wire dimensions
HI18	0156 602 001	Inlet nozzle	Fe, Ss, Al & cored	Ø 2 mm plastic for 0.6–1.6 mm

Welding with aluminium wire

In order to weld with aluminium wire, proper rollers, nozzles and liners for aluminium wire **must** be used, It is recommended to use 3 m long welding torch for aluminium wire, equipped with appropriate wear parts.

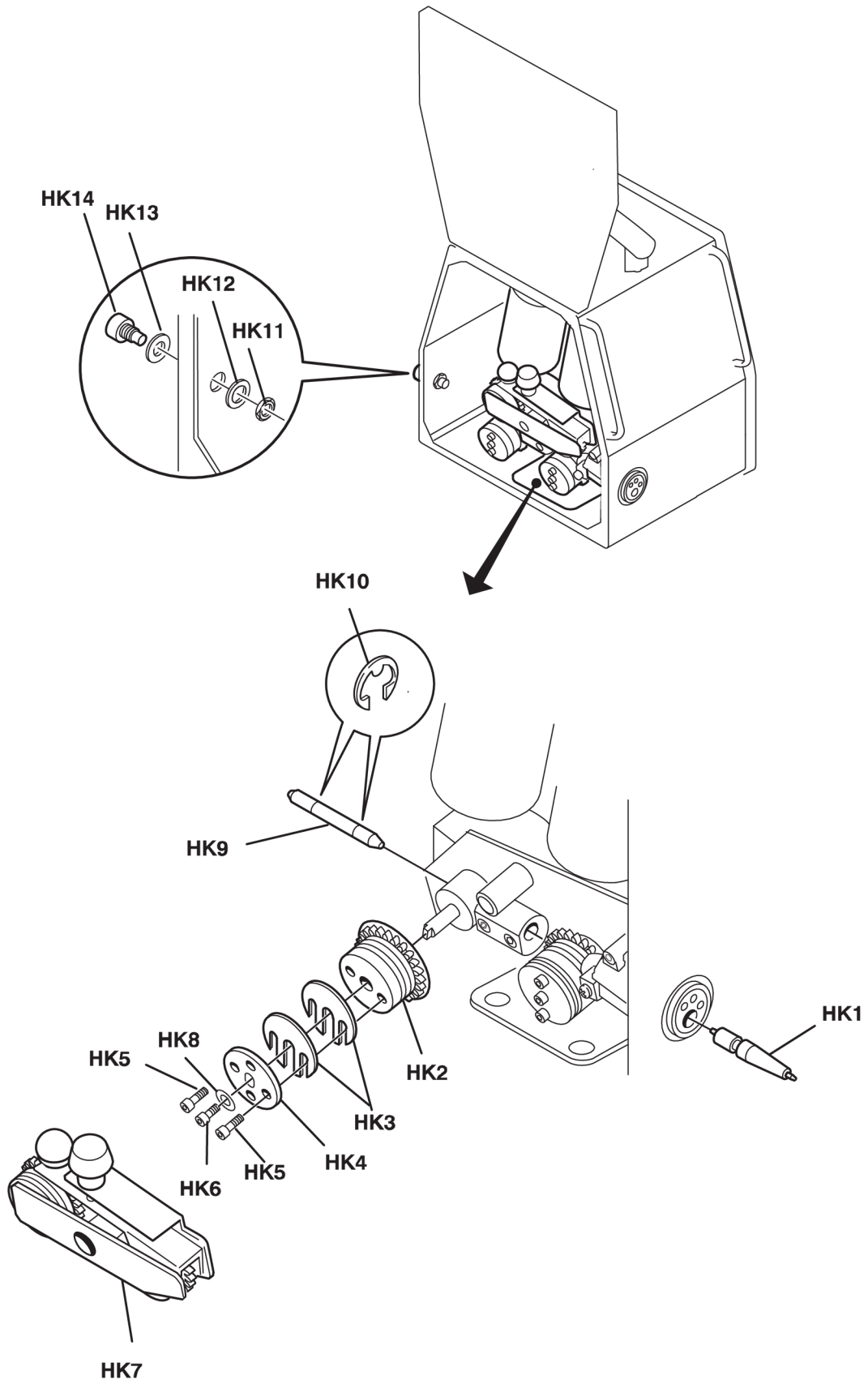


Feed 4804

Item	Ordering no.	Denomination	Wire type	Wire dimensions
HK1	0469 837 880	Outlet nozzle	Fe, Ss & cored	Ø 2.0 mm steel for 0.6-1.6 mm
	0469 837 881	Outlet nozzle	Al	Ø 2.0 mm plastic for 1.0-1.6 mm
	0469 837 882	Outlet nozzle	Fe, Ss & cored	Ø 3.4 mm steel for 2.0-2.4 mm

Item	Ordering no.	Denomination	Wire type	Wire Ø mm	Groove 1	Groove 2	Groove 3	Groove type	Roller/Bogey markings
HK2	0366 966 880	Feed roller	Fe, Ss & cored	0.6-1.2	0.6-0.8	0.9-1.0	1.2	V	1
	0366 966 888	Feed roller	Fe, Ss & cored	0.9	0.9	0.9	0.9	V	.035"
	0366 966 881	Feed roller	Fe, Ss & cored	1.4-1.6	1.4-1.6	2.0	2.4	V	2
	0366 966 890	Feed roller	Fe, Ss & cored	1.6	1.6	1.6	1.6	V	1/16
	0366 966 889	Feed roller	Fe, Ss & cored	1.2	1.2	1.2	1.2	V	.045" / 7
	0366 966 900	Feed roller	Fe, Ss & cored	0.9-1.6	0.9-1.0	1.2	1.4-1.6	V	6
	0366 966 893	Feed roller	Cored	1.2	1.2	1.2	1.2	V-Knurled	.045"
	0366 966 882	Feed roller	Cored	1.2-2.0	1.2	1.4-1.6	2.0	V-Knurled	3
	0366 966 894	Feed roller	Cored	1.6	1.6	1.6	1.6	V-Knurled	1/16
	0366 966 883	Feed roller	Cored	2.4	2.4	not used	not used	V-Knurled	4
	0366 966 885	Feed roller	Al	1.2	1.2	1.2	1.2	U	U2
	0366 966 899	Feed roller	Al	1.0-1.6	1.0	1.2	1.6	U	U4

Item	Ordering no.	Denomination	Notes	
HK3	0156 707 001	Distance washer		
HK4	0156 707 002	Adjustment spacer		
HK5		Screw	M5×20	
HK6		Screw	M5×16	



HD = Heavy Duty

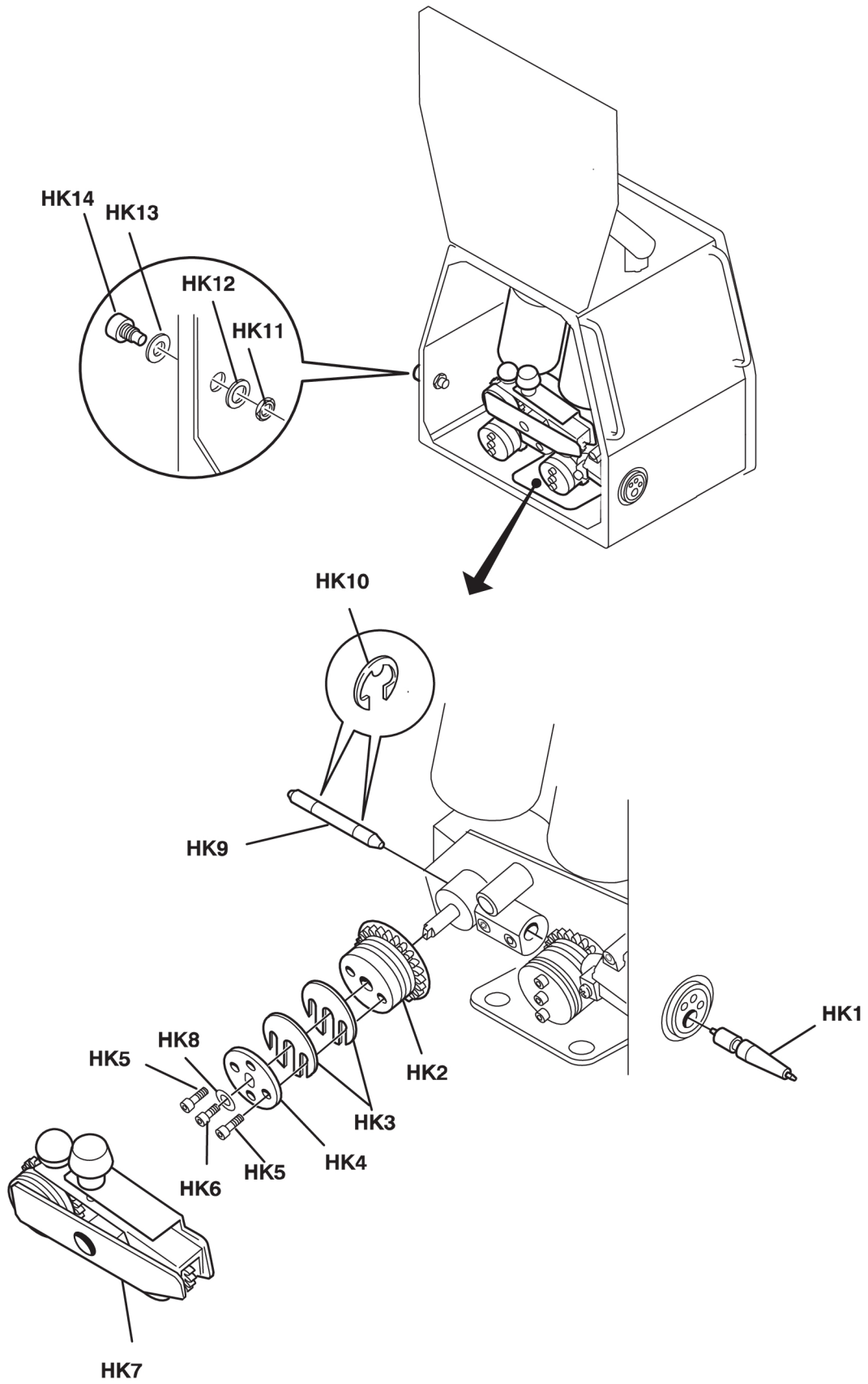
Item	Ordering no.	Denomination	Wire type	Wire dimensions (mm)	Groove type	Roller/Bogey markings
HK7	0366 902 880	Bogey (HD)	Fe, Ss & cored	Ø 0.6 - 1.2 mm	V	1
	0366 902 902	Bogey (HD)	Fe, Ss & cored	Ø 0.9	V	.035"
	0366 902 900	Bogey (HD)	Fe, Ss & cored	Ø 0.9 - 1.6 mm	V	6
	0366 902 881	Bogey (HD)	Fe, Ss & cored	Ø 1.4 - 2.4 mm	V	2
	0366 902 894	Bogey (HD)	Fe, Ss & cored	Ø 1.2 mm	V	.045" / 7
	0366 902 901	Bogey (HD)	Fe, Ss & cored	Ø 1.6 mm	V	1/16
	0366 902 903	Bogey (HD)	Cored	Ø 1.2 mm	V-Knurled	.045"
	0366 902 882	Bogey (HD)	Cored	Ø 1.2 - 2.0 mm	V-Knurled	3
	0366 902 904	Bogey (HD)	Cored	Ø 1.6 mm	V-Knurled	1/16
	0366 902 883	Bogey (HD)	Cored	Ø 2.4 mm	V-Knurled	4
	0366 902 899	Bogey (HD)	Al	Ø 1.0 - 1.6 mm	U	U4
	0366 902 886	Bogey (HD)	Al	Ø 1.2 mm × 3	U	-

Item	Ordering no.	Denomination	Wire type	Wire dimensions
HK8	0366 944 001	Washer		
HK9	0156 603 001	Intermediate nozzle	Fe, Ss & Al	Ø 2 mm plastic for 0.6-1.6 mm
	0156 603 002	Intermediate nozzle	Fe, Ss & Al	Ø 4 mm plastic for 2.0-2.4 mm
	0332 322 001	Intermediate nozzle	Cored	Ø 2.4 mm copper for 1.2-2.0 mm
	0332 322 002	Intermediate nozzle	Cored	Ø 4 mm copper for 2.4 mm

Item	Ordering no.	Denomination	Note
HK10	0215 702 708	Locking washer	
HK11		Nut	M10
HK12	0458 748 002	Insulating washer	
HK13	0458 748 001	Insulating bushing	

HD = Heavy Duty

Item	Ordering no.	Denomination	Wire type	Wire dimensions
HK14	0156 602 001	Inlet nozzle	Fe, Ss, Al & Cored	Ø 2 mm plastic for 0.6-1.6 mm
	0156 602 002	Inlet nozzle	Fe, Ss, Al & Cored	Ø 4 mm plastic for 2.0-2.4 mm
	0332 318 001	Inlet nozzle (HD)	Fe, Ss & Cored	Ø 2.4 mm steel for 1.2-2.0 mm
	0332 318 002	Inlet nozzle (HD)	Fe, Ss & Cored	Ø 4 mm steel for 2.4 mm





A WORLD OF PRODUCTS AND SOLUTIONS.



For contact information visit esab.com

ESAB AB, Lindholmsallén 9, Box 8004, 402 77 Gothenburg, Sweden, Phone +46 (0) 31 50 90 00

manuals.esab.com

